

domenews

THE LATEST NEWS FROM DESIGN CENTRE CHELSEA HARBOUR

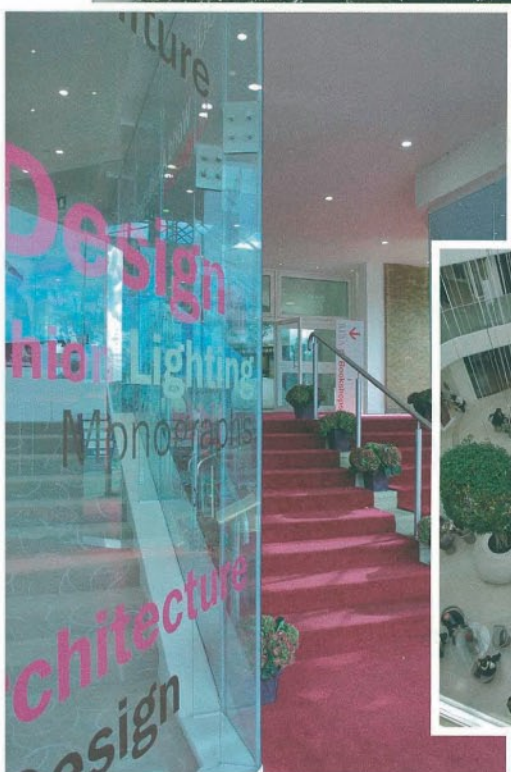


FOCUS/07

IS THE HAUTE COUTURE EVENT OF THE INTERIOR DESIGN SEASON WHEN THE DOMES FIZZ WITH ENERGY AND INSPIRATION. Offering the best in design and decoration with an emphasis on understated luxury, the importance of Focus is reflected in the high calibre of visitors who attended from home and overseas.

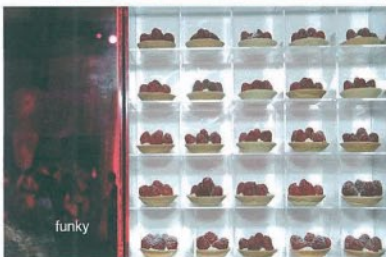
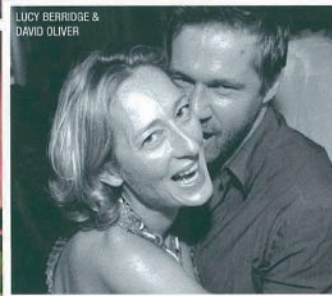
"The Design Centre showcases the ultimate in stylish living," says Managing Director Helen Fifield. "More people than ever are coming to Focus as it's recognised as the international benchmark for quality and excellence."

Described by the *Evening Standard* as "unfailingly fabulous", visitors admired the finishing touches to the £6m refurbishment project. Award-winning landscape designer Jinny Blom masterminded a scheme that enhanced the Design Centre's architecture. Spectacular trees and a powerful installation of swans suspended, as if flying through a rain shower and coming into land, bought the iconic domes to life.

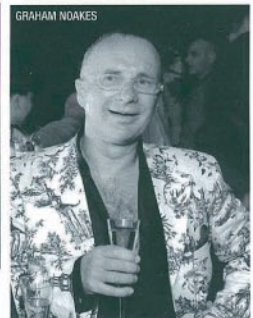
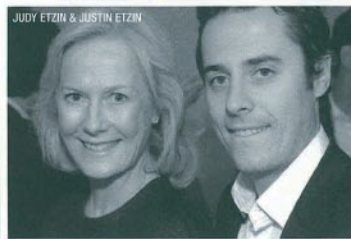


FOCUS/07 *The big night...*

Monday 25 | September



Focus/07 highlights included events, lectures and book signings from some of the UK's leading style experts. The hottest ticket was for the glamorous Focus/07 party which took partying to new heights.

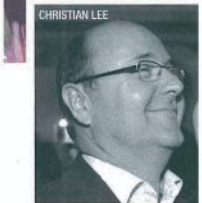




JOHN SACH



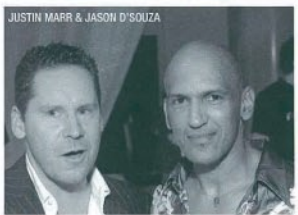
SIMONE TOMAROLI



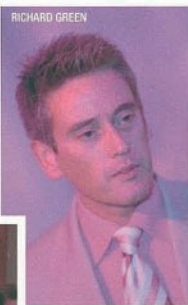
CHRISTIAN LEE



SERGIO DALL'OLIO & JESUS GARRABIETA



JUSTIN MARR & JASON D'SOUZA



RICHARD GREEN



ZOE MITCHELL, JO CARELESS & BLANCHE WILLIAMS



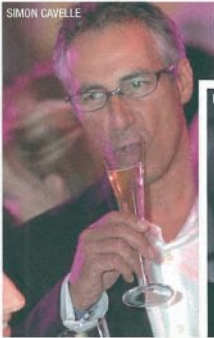
ANNA DODONOVA, RICCARDO LUCRETELLO & SIMON COOK



ILAN MAESTRO



CHRISTOPHER LITTLER, ALAN PURCHASE, EMMA PETTIFER-RICHARDSON, MARK GILLETTE & STUART FRANCIS



SIMON CAVELLE



PAUL PHEYSEY



KATIE GACEM & BECKY METCALFE



MATTHEW WAILES & VMPR



ANNABEL HALL



LYNN SOUTHGATE, VANESSA RICHARDS & KELLY WATSON



GUIDO DENTAMARO



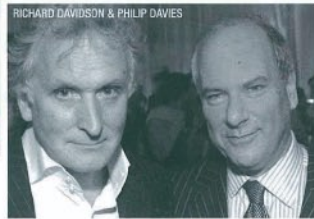
SARAH HAGGER



TAFFY SCHNEIDER



BRONWYN HEPWORTH, JANINE HEPWORTH & STEPHANIE BETTS



RICHARD DAVIDSON & PHILIP DAVIES



other news...

TURNING OVER A NEW LEAF



The magnificent trees are a permanent fixture. Hand-picked in Holland, black olive trees (*Bucida buceras*) were selected for the north dome. Over seven metres tall, they were under-planted with *Liriope* to resemble grass, as if plucked from a forest. *Ficus Panda* was chosen

for the south dome. Over-scaling is a keynote and each tree was positioned in a giant planter sculpted from jesmonite; a non toxic stone, it can be moulded easily and was also used to make bespoke stools. "Trees change the nature of places by affecting air and light quality. They open people's hearts," says Jinny Blom who masterminded the installation.

LONDON DESIGN WEEK 2008

Sunday 9, Monday 10, Tuesday 11 March
Trade professionals only

Wednesday 12, Thursday 13, Friday 14 March
All Welcome



DON'T MISS THE NEXT ISSUE

APRIL ISSUE OUT
1 MARCH 2008

To book your advertising please contact Jo Careless on 020 7225 9126, or email: jocareless@chelsea-harbour.co.uk

INTERIOR DESIGN SALE

ON 15, 16, 17, 18 JANUARY 2008
10am-5pm (Thursday 17 January, 10am-8pm)

HUGE DISCOUNTS UP TO 80%
on selected merchandise at participating showrooms

DESIGN CENTRE CHELSEA HARBOUR
Altfield, Alton-Brooke, Anna Casa Interiors, Bessellink & Jones, Arthur Brett Bespoke, Baker London, Bella Figura, Bolier & Co, Borderline, Brunswick & Fils, Chase Erwin, Christopher Hyde Lighting, Davidson, Donghia, Fox Linton, Garin 1820, Golfar & Hughes, GP & J Baker, Greenline Interiors, Interdesign, Interior Supply, J Robert Scott, Jason D'Souza, Josephine Home, Marvic Textiles, Mulberry Home, Nina Campbell Furniture, Nobilis, Porta Romana, Romo, Stark Carpet, Summit Furniture, Top Floor Rugs/Wood, Theodore Alexander, Via Arkadia (Tiles), William Brinton Ltd

For further information call 020 7225 9101 or email: enquiries@chelsea-harbour.co.uk
DESIGN CENTRE CHELSEA HARBOUR, LOTS RD, LONDON SW10 0XE